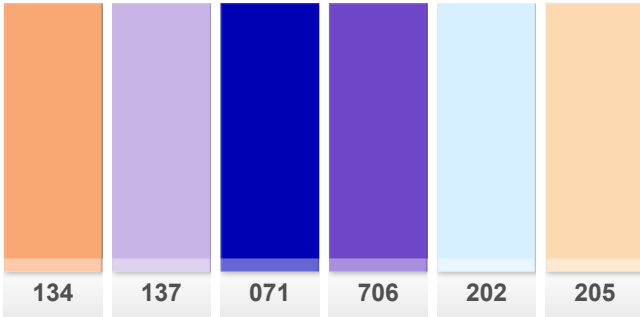




My Colour List Sat Nov 11 2017



Golden Amber

Great for emulating a sunset. Also good for side lighting and cyclorama lighting.

Transmission Y	37.8 %
x	0.501
y	0.371
Absorption	0.42

Source C: Colour Temperature 6774K

Accurate and consistent colour from batch to batch.

ROLLS

1" Core 7.62m x 1.22m (25' x 48")

2" Core 7.62m x 1.22m (25' x 48")

Quick Roll Up to 1.17m (46") x 7.62m (25') long.

SHEETS

Full Sheet 1.22m x 0.53m (48" x 21")

Half Sheet 0.61m x 0.53m (24" x 21")

134



Special Lavender

Good for moonlight and musical / romantic scenes. Enhances skin tones.

Transmission Y	26.4 %
x	0.231
y	0.175
Absorption	0.58

Source C: Colour Temperature 6774K

Accurate and consistent colour from batch to batch.

ROLLS

1" Core 7.62m x 1.22m (25' x 48")

2" Core 7.62m x 1.22m (25' x 48")

Quick Roll Up to 1.17m (46") x 7.62m (25') long.

SHEETS

Full Sheet 1.22m x 0.53m (48" x 21")

Half Sheet 0.61m x 0.53m (24" x 21")

137



Tokyo Blue

A deep blue, used for midnight scenes and cyclorama lighting.

Transmission Y	1 %
x	0.151
y	0.03
Absorption	2

Source C: Colour Temperature 6774K

Accurate and consistent colour from batch to batch.
Available as a High Temperature filter.

ROLLS

1" Core 7.62m x 1.22m (25' x 48")

2" Core 7.62m x 1.22m (25' x 48")

High Temperature 4m x 1.17m (13' x 46")

Quick Roll Up to 1.17m (46") x 7.62m (25') long.

SHEETS

Full Sheet 1.22m x 0.53m (48" x 21")

Half Sheet 0.61m x 0.53m (24" x 21")

High Temperature 0.56m x 0.53m (22" x 21")

071

King Fals Lavender

A cold lavender.

Transmission Y	5.5 %
x	0.186
y	0.091
Absorption	1.26

Source C: Colour Temperature 6774K

Created by Henrik Hambro as a part of LEE Designer Series.

ROLLS

1" Core 7.62m x 1.22m (25' x 48")

2" Core 7.62m x 1.22m (25' x 48")

Quick Roll Up to 1.17m (46") x 7.62m (25') long.

SHEETS

Full Sheet 1.22m x 0.53m (48" x 21")

Half Sheet 0.61m x 0.53m (24" x 21")

706

Half CTB

Converts tungsten (3200K) to daylight (4300K).

Transmission Y	54.9 %
x	0.261
y	0.273
Absorption	0.26

Source C: Colour Temperature 6774K

Accurate and consistent colour from batch to batch.

ROLLS

1" Core 7.62m x 1.22m (25' x 48")

2" Core 7.62m x 1.22m (25' x 48")

Quick Roll Up to 1.17m (46") x 7.62m (25') long.

SHEETS

Full Sheet 1.22m x 0.53m (48" x 21")

Half Sheet 0.61m x 0.53m (24" x 21")

202

Half CTO

Converts daylight (6500K) to tungsten light (3800K).

Transmission Y	70.8 %
x	0.374
y	0.364
Absorption	0.15

Source C: Colour Temperature 6774K

Accurate and consistent colour from batch to batch.

ROLLS

1" Core 7.62m x 1.22m (25' x 48")

2" Core 7.62m x 1.22m (25' x 48")

Wide Roll 6.10m x 1.52m (20' x 60")

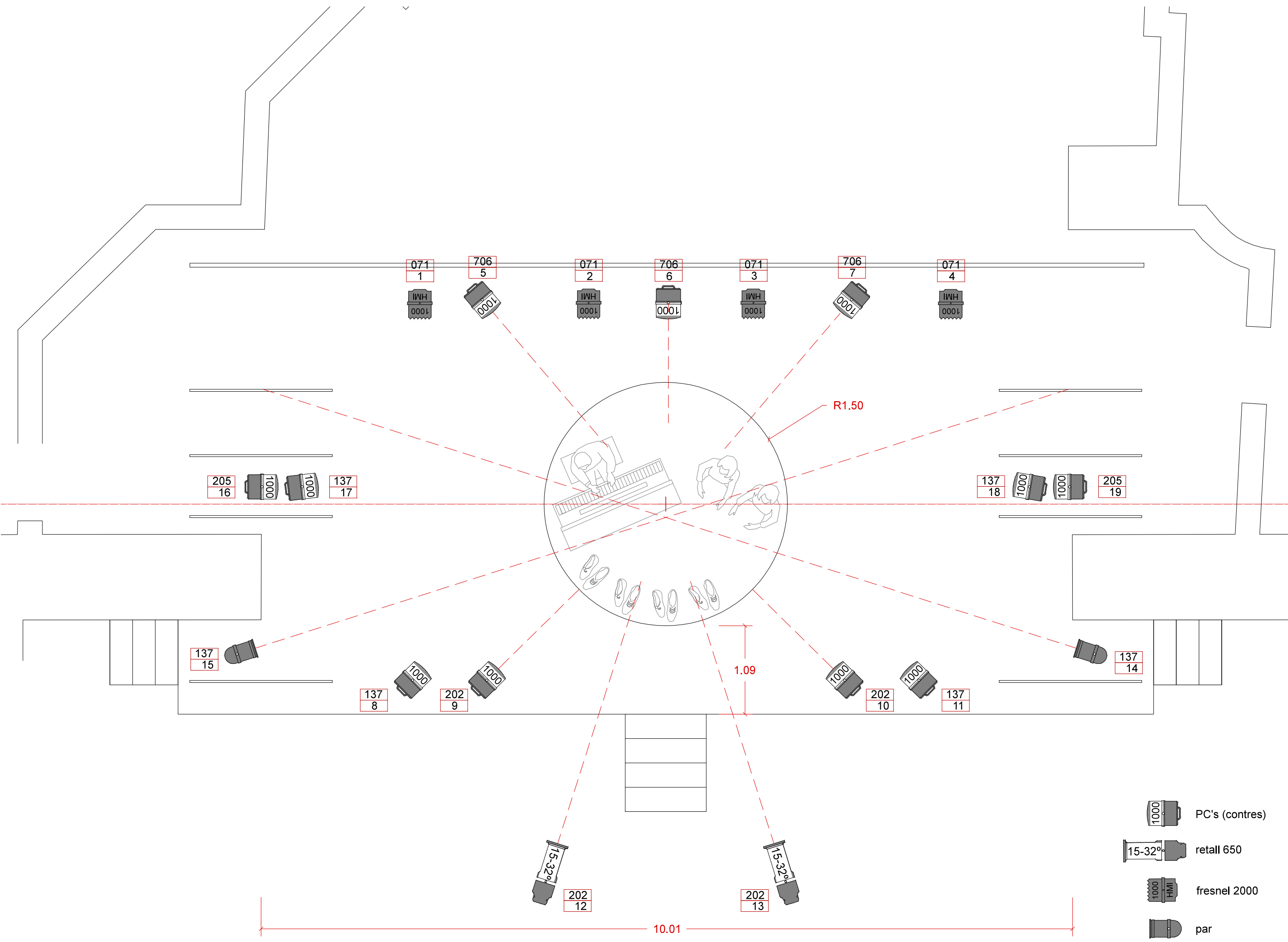
Quick Roll Up to 1.17m (46") x 7.62m (25') long.

SHEETS

Full Sheet 1.22m x 0.53m (48" x 21")

Half Sheet 0.61m x 0.53m (24" x 21")

205



Observacions: -